

JUNE 2022 PROMOTIONS

Casino Marketing Department

Marketing Manager

Matt Smith
Matthew.Smith@gila.casino
Ext. 8206
Cell: (480) 267-3413

Marketing Coordinators

Christen Lewis
Christen.Lewis@gila.casino
Ext. 8204
Cell: (602) 499-9233

Alyssa Shirley
Alyssa.Shirley@gila.casino
Ext. 8203
Cell: (480) 338-5472

Jack Turner
Jack.Turner@gila.casino
Ext. 8635
Cell: (610) 547-7474



JUNE 2022 PROMOTIONS

TABLE OF CONTENTS

Casino Promotions

Club Classic	3
Official Rules "Club Classic" Promotion	4
Born Lucky	5
Official Rules "Born Lucky" Promotion	6
Swipes For Service	7
Official Rules "Swipes For Service" Promotion	8
Progressive Drawing	9
Official Rules "Progressive Drawing" Promotion	10
Email Kiosk Game	11
Stay in the Loop Text Campaign	12
Official Rules "Stay in the Loop Text Campaign" Promotion	13
Backpack Giveaway	14
Official Rules "Backpack Giveaway" Promotion	15
\$75,000 Resort Giveaway	16
Official Rules "\$75,000 Resort Giveaway"	17-18
Build Your Bonus	19
Official Rules "Build Your Bonus" Promotion	20
UFC 275	21

Direct Mail & Events

"Money Honey Swipe and Win"	22
Official Rules "Money Honey Swipe And Win" Promotion	23
It's Your Day Monday Drawings	24
Official Rules "It's Your Day Monday Drawing" Promotion	25-26
Membership Multiplier	27
Pull Tabs	28
Official Rules "Pull Tabs"	29

Table Games

June Poker Promotions	30-31
-----------------------	-------

Informational

PlayGila App	32
--------------	----

CLUB CLASSIC

Casino Promotions



The sign features a crown logo at the top with the word "CLUB" in large, bold letters and "CLASSIC" in smaller letters below it. The text "THE CARD MEMBERS AGE 50+ VISIT THE PLAYERS CLUB TO GET YOUR CLUB CLASSIC STICKER" is centered below the logo. A yellow banner with "EVERY TUESDAY" is positioned below the text. A red banner with "SWIPE & WIN" is prominently displayed. Below this, it says "at any kiosk for up to \$250 FREE BONUS PLAY" and "ONE FREE SWIPE PER WEEK!". At the bottom, there is a table for "INSTANTLY WIN FREE BONUS PLAY" with four rows: Emerald (\$5 - \$250), Ruby (\$10 - \$250), Gold (\$15 - \$250), and Platinum (\$20 - \$250).

THE CARD MEMBERS AGE 50+ VISIT THE PLAYERS CLUB TO GET YOUR CLUB CLASSIC STICKER

EVERY TUESDAY

SWIPE & WIN

at any kiosk for up to **\$250 FREE BONUS PLAY**
ONE FREE SWIPE PER WEEK!

INSTANTLY WIN FREE BONUS PLAY

Emerald	\$5 - \$250
Ruby	\$10 - \$250
Gold	\$15 - \$250
Platinum	\$20 - \$250

- WHAT:** Club Classic
- WHEN:** Tuesdays | 7am – 7pm
- WHO:** Players Club Members 50 years or older
- WHERE:** Promo Kiosks or Mobile App
- DETAILS:** Guests 50 years or older can swipe at any kiosk for a chance to instantly win up to \$250 in Free Bonus Play. One free swipe per week!

***FREE BONUS PLAY IS VALID FOR 24 HOURS**

CLUB CLASSIC OFFICIAL RULES

Casino Promotions

Eligibility: Open to all eligible Gila River Casinos Players Club members. Members must be aged 50 or older. Team Members, their immediate family (father, mother, sister, brother, spouse, children, grandparents, aunt & uncle) and household members of Marketing Team Members are excluded from participation in Promotions, Lotteries, Tournaments and Swipe and Win Promotions.

No Purchase Necessary: Players Club members age 50 or older may obtain one (1) free play for the “Club Classic Swipe & Win” promotion each week at THE Card Kiosk, which is offered between the hours of 7:00am to 7:00pm on Tuesday, March 2, 2021 and every Tuesday going forward until terminated at Lone Butte Casino, Wild Horse Pass Hotel and Casino and Vee Quiva. The swipe and win game will reveal free bonus play prizes ranging from \$5-\$250. Free Bonus Play prize, if won, will be automatically loaded on to players account and valid at any property. **Free Bonus Play will be restricted, cannot be cashed out and is valid for 24 hours at Lone Butte Casino, Wild Horse Pass Hotel and Casino and Vee Quiva Hotel and Casino.**

Odds of Winning: Odds of winning depend on the total amount of points earned on THE Card during the promotion time period and amount of qualified game plays earned.

Rules: By participating, eligible guests agree to be bound by these rules. The offer is non-transferable between participants. To redeem the offer, Players Club members must receive or be awarded the offer for this specific promotional event based on their age, and must present a valid photo I.D. (as accepted by GRGE’s current approved identification policy) and Players Club card at the casino’s Players Club during promotion hours, as required.

Additional Terms. By accepting prizes, winners agree that GRGE, their affiliates and agents, will have no liability and will be held harmless by winners for any liability, loss, injury or damage to property or to person, due in whole or in part, directly, or indirectly, by reason of the acceptance, possession, use or misuse of the prizes or participation in this promotion event. All winners shall be responsible for payment of any applicable taxes, licenses, registrations, or other imposed fees, on prize(s) won. Winners will be subject to all applicable taxes before release of prize, including back-up withholding if necessary. By participation in the promotion event, winners consent to the use of their names and/or likenesses for promotional purposes without additional compensation. Participants agree that the decisions of GRGE related to this promotion event and all drawings are final. Patron disputes, in which there is a refusal of paid winnings involving at least \$500.00 will be referred to the Tribal Gaming Office (TGO) in compliance with the Compact and Gaming Ordinance. In the promotion event of a procedural dispute, the decision of a Gila River Gaming Enterprise management staff shall be final. Management reserves the right to alter, amend, edit or withdraw this promotion at any time, without prior notice (subject to prior approval from the TGO). Management reserves the right to distribute gifts from existing inventory. Management reserves the right to disqualify any individual found to discredit the integrity of the promotion through abuse, fraud or other exploitation of the official rules. GRGE reserves the right, in their sole discretion, to disqualify from this and/or future promotions any individual found to be tampering with, or attempting to defraud, the entry process or the operation of the promotion event; to be acting in violation of these rules; or to be acting in a disruptive manner or with intent to annoy, abuse, threaten or harass any other person.

Void Where Prohibited: This promotion event is void where prohibited or restricted

BORN LUCKY

Casino Promotions



WHAT: Born Lucky
WHEN: The birthday of the guest
WHO: Players Club Members
WHERE: Promo Kiosks or Mobile App
DETAILS: On their birthday, guests can swipe at any kiosk for a chance to instantly win up to \$150 in Free Bonus Play.

***FREE BONUS PLAY IS VALID FOR 24 HOURS**

BORN LUCKY

OFFICIAL RULES

Casino Promotions

Eligibility: Open to all eligible Gila River Casino Players Club members on day of their Birthday only. Members must be aged 21 or older. Marketing Team Members, their immediate family (father, mother, sister, brother, spouse, children, grandparents, aunt & uncle) and household members of Marketing Team Members are excluded from participation in Promotions, Lotteries, Tournaments and Swipe and Win Promotions.

Criteria: All eligible Players Club members are qualified to participate on the day of their birthday only. Offer available from 12:01 am- 11:59 pm.

Prizes: Eligible Players Club members will play a Swipe and Win game at the Promo Kiosk available on birthday only. Swipe and win game can be played one (1) time only at either Vee Quiva Hotel & Casino, Wild Horse Pass Hotel & Casino or Lone Butte Casino. The Swipe and Win game will reveal Free Bonus Play prizes ranging from \$5 - \$150. Free Bonus Play will be automatically loaded on players' accounts and valid for (1) day from the time of issuance. Free Bonus Play credits are restricted and cannot be cashed out.

Odds of Winning: Guest is guaranteed to receive a Free Bonus Play prize if they participate on the day of their birthday, offer value will be based upon their recent level of play.

Rules: By participating, contestants agree to be bound by these rules. Maximum one (1) swipe per person, per calendar year. Prizes are non-transferable between participants or sites.

Additional Terms: By accepting prizes, winners agree that GRGE, their affiliates and agents, will have no liability and will be held harmless by winners for any liability, loss, injury or damage to property or to person, due in whole or in part, directly, or indirectly, by reason of the acceptance, possession, use or misuse of the prizes or participation in this promotion event. All winners shall be responsible for payment of any applicable taxes, licenses, registrations, or other imposed fees, on prize(s) won. Winners will be subject to all applicable taxes before release of prize, including back-up withholding if necessary. By participation in the promotion event, winners consent to the use of their names and/or likenesses for promotional purposes without additional compensation. Participants agree that the decisions of GRGE related to this promotion event and all drawings are final. Patron disputes, in which there is a refusal of paid winnings involving at least \$500.00 will be referred to the Tribal Gaming Office (TGO) in compliance with the Compact and Gaming Ordinance. In the event of a procedural dispute, the decision of a Gila River Gaming Enterprise management staff shall be final. Management reserves the right to alter, amend, edit or withdraw this promotion at any time, without prior notice (subject to prior approval from the TGO). Management reserves the right distribute gifts from existing inventory. Management reserves the right to disqualify any individual found to discredit the integrity of the promotion through abuse, fraud or other exploitation of the official rules. GRGE reserves the right, in their sole discretion, to disqualify from this and/or future promotions any individual found to be tampering with, or attempting to defraud, the entry process or the operation of the promotion event; to be acting in violation of these rules; or to be acting in a disruptive manner or with intent to annoy, abuse, threaten or harass any other person.

Void Where Prohibited: This promotion event is void where prohibited or restricted by law.

SWIPES FOR SERVICE

Casino Promotions



- WHAT:** Swipes for Service
WHEN: Monday - Friday
WHO: Active and Retired Military Players Club Members
WHERE: Players Club and Promo Kiosk or Mobile App
PRIZE: Swipe once Monday-Friday and Win up to \$100 Free Bonus Play
DISCOUNT: 15% discount off select food purchases

***FREE BONUS PLAY IS VALID FOR 24 HOURS**

SWIPES FOR SERVICE

OFFICIAL RULES

Casino Promotions

Eligibility: Select Players Club Members Open to all eligible Gila River Casinos Players Club members. Members must be aged 21 or older. Team Members, their immediate family (father, mother, sister, brother, spouse, children, grandparents, aunt & uncle) and household members of Marketing Team Members are excluded from participation in Promotions, Lotteries, Tournaments and Swipe and Win Promotions.

Criteria: All Players Club members who are active or retired Military are eligible to participate. Guests must present THE Card, valid ID and any proof of Military service to the Players Club.

Coupon: Eligible Players Club members will receive a voucher for a 15% discount toward select food purchase. Discount does not apply toward Shula's Steak House, tobacco products, packaged foods or bottles drinks and discounted items. Coupon may only be used once and cannot be combined with any other discount offers.

Prizes: Eligible Players Club members will play a Swipe and Win game at the Promo Kiosk, Monday through Friday for a Free Bonus Play prize. Participants are eligible to Swipe and Win one (1) time each week at either Lone Butte Casino, Vee Quiva Hotel and Casino or Wild Horse Pass Hotel and Casino. The Swipe and Win game will reveal Free Bonus Play prizes ranging from \$5 - \$100. Free Bonus Play will be automatically loaded on players' accounts and valid at any property. Free Bonus Play will be valid for 24 hours from the time of issuance. Free Bonus Play credits are restricted and cannot be cashed out.

Odds of Winning: Odds of winning depend on the number of Swipe and Win games played at the Promo Kiosk

Rules: By participating, contestants agree to be bound by these rules. Maximum one (1) swipe per person, per week at one (1) of the properties. Prizes are non-transferable between participants or sites.

Additional Terms: By accepting prizes, winners agree that GRGE, their affiliates and agents, will have no liability and will be held harmless by winners for any liability, loss, injury or damage to property or to person, due in whole or in part, directly, or indirectly, by reason of the acceptance, possession, use or misuse of the prizes or participation in this promotion event. All winners shall be responsible for payment of any applicable taxes, licenses, registrations, or other imposed fees, on prize(s) won. Winners will be subject to all applicable taxes before release of prize, including back-up withholding if necessary. By participation in the promotion event, winners consent to the use of their names and/or likenesses for promotional purposes without additional compensation. Participants agree that the decisions of GRGE related to this promotion event and all drawings are final. Patron disputes, in which there is a refusal of paid winnings involving at least \$500.00 will be referred to the Tribal Gaming Office (TGO) in compliance with the Compact and Gaming Ordinance. In the event of a procedural dispute, the decision of a Gila River Gaming Enterprise management staff shall be final. Management reserves the right to alter, amend, edit or withdraw this promotion at any time, without prior notice (subject to prior approval from the TGO). Management reserves the right distribute gifts from existing inventory. Management reserves the right to disqualify any individual found to discredit the integrity of the promotion through abuse, fraud or other exploitation of the official rules. GRGE reserves the right, in their sole discretion, to disqualify from this and/or future promotions any individual found to be tampering with, or attempting to defraud, the entry process or the operation of the promotion event; to be acting in violation of these rules; or to be acting in a disruptive manner or with intent to annoy, abuse, threaten or harass any other person.

Void Where Prohibited: This promotion event is void where prohibited or restricted by law.

PROGRESSIVE DRAWINGS

Casino Promotions



WHAT: Progressive Drawings
WHEN: Thursdays in June | 7pm
Grand Finale Drawing | June 30 | 7pm
WHO: All Players Club Members ***Available on the Gila River App**
WHERE: Promotions Stage
DETAILS: Twenty (20) winners each drawing can win up to \$1,000 in FBP or pick the Progressive Prize and win up to \$25,000 cash!

- Drawing tickets are now digitally activated by THE Card kiosks, any activity with the card at slot machines, or by table games pit. Guests must check-in between 6pm – 7pm on drawing days.
- The grand prize amount will alternate between \$20,000 and \$25,000, depending on how many Thursdays are in the month.
- Guests can visit THE Card kiosk starting at 12AM to receive their entry THEN they can activate it in between 6PM and 7PM by playing at a slot machine or by the Table Games pit. Guests MUST visit THE Card Kiosk to get the drawing entry.

***FREE BONUS PLAY OF \$250 IS VALID FOR 24 HOURS**

***FREE BONUS PLAY OF \$500-\$750 IS VALID FOR 72 HOURS**

***FREE BONUS PLAY OF \$1,000 IS VALID FOR 7 DAYS**

PROGRESSIVE DRAWINGS

OFFICIAL RULES

Casino Promotions

Eligibility: Open to all eligible Gila River Casinos Players Club members. Members must be aged 21 or older. Marketing Team Members, their immediate family (father, mother, sister, brother, spouse, children, grandparents, aunt & uncle) and household members of Marketing Team Members are excluded from participation in Promotions, Lotteries and Tournaments.

No Purchase Necessary: Select Players Club members may obtain one (1) free entry redeemable with any activity using THE Card, including any activity at THE Card Kiosks. One (1) for each drawing date; limit one (1) free entry per person, per drawing day.

Additional Entry Methods: No additional entries will be available for this promotion.

Drawings: Drawings will be held at Lone Butte every Thursday, January 6, 2022 – December 29, 2022. Twenty (20) winners will be drawn at 7pm each night to participate in the Progressive Giveaway. Each winner will then be enrolled into the Progressive Giveaway kiosk game to select one (1) prize. There will be a total of two hundred-fifty (250) prizes. The prizes will range between \$250 - \$1,000 Free Bonus Play and a Grand Prize starting at \$5,000 cash. Winners will have until 9PM each drawing date to select their prize from the kiosk. If the Grand Prize is not won each drawing date, the progressive amount will roll over to the next drawing date and an additional \$5,000 cash will be added up to a maximum of \$20,000 in months with four (4) Thursdays and \$25,000 in months with five (5). Each time the Grand Prize is won it will reset at \$5,000 for the next drawing date. If the Grand Prize is not won at all it will be a must-go amount for the Grand Finale Drawing occurring the final Thursday of each month. During the month of November 2022, the Grand Finale will be moved from November 24, 2022 to November 17, 2022. Due to shortened weeks, the Grand Prize Progressive Capsule will start at \$10,000. The November 2022 Progressive payout will be \$20,000 cash. Free Bonus Play credits ranging from \$250-\$499 are valid for 24 Hours, Free Bonus Play credits ranging from \$500-\$999 are valid for 72 Hours, and Free Bonus Play credits ranging from \$1,000 or greater are valid for 7 Days. Free Bonus Play credits are restricted – cannot be cashed out.

Grand Finale Drawing: On the last Thursday of each month, twenty (20) winners will be drawn at 7pm to participate in the Grand Finale Progressive Drawing. Each winner will then be enrolled into the Progressive Giveaway kiosk game to select one (1) prize. There will be twenty (20) total prizes. Nineteen (19) prizes will range between \$250-\$1,000 Free Bonus Play and one (1) Grand Prize will contain a cash prize ranging from \$5,000 - \$25,000 cash. Nineteen (19) winners will receive a Free Bonus Play prize and One (1) winner will win the Progressive amount. The Grand Finale for November 2022 will be rescheduled to the second to last Thursday of the month. Due to shortened weeks, the Grand Prize Progressive Capsule will start at \$10,000. Free Bonus Play credits ranging from \$250-\$499 are valid for 24 Hours, Free Bonus Play credits ranging from \$500-\$999 are valid for 72 Hours, and Free Bonus Play credits ranging from \$1,000 or greater are valid for 7 Days. Free Bonus Play credits are restricted – cannot be cashed out.

Entry Activation: Players Club members are required to activate their entry within one (1) hour of the drawing for all drawings each promotion day. Activation options are as follows: request for entry activation at Players Club, any activity at THE Card kiosks, or other specific activity on a gaming machine during the required activation period. Players Club members may request a Table Games supervisor to activate their entries at the Blackjack Pit – guest's rating must be closed prior to the drawing time during the activation period to activate within one (1) hour of the drawing time.

Odds of Winning: Odds of winning depend on the number of eligible entries received in the drawing.

Rules: By participating, contestants agree to be bound by these rules. Entries drawn at any given drawing will be discarded and will not be eligible for subsequent drawings. Incomplete entries, or entries bearing multiple names, will be void. Participants are eligible to win once per drawing each drawing day. Name(s) will be drawn at the designated times and shall be announced on the main casino floor. The participant must be present to win and will have four (4) minutes to provide both a valid Photo I.D. (as accepted by GRGE's current approved identification policy) and Players Club card to the drawing host. Both items must be in the hands of the drawing host within the four (4) minute time period to claim the prize. It is the sole responsibility of the potential winner to listen for the announced name, and to arrive at the drawing area within the allotted time. Prizes are non-transferable between participants or sites. If any name drawn violates these official rules, qualification criteria, or contestant does not arrive within the allotted time their prize will be forfeited, another name will be drawn until a winner is confirmed. GRGE is not responsible for lost, misdirected, late, illegible or unintelligible entries, or any technical or human error that may occur in the processing of entries or pronunciation of names. Mechanically reproduced entries are not permitted and will be deemed void.

Additional Terms: By accepting prizes, winners agree that GRGE, their affiliates and agents, will have no liability and will be held harmless by winners for any liability, loss, injury or damage to property or to person, due in whole or in part, directly, or indirectly, by reason of the acceptance, possession, use or misuse of the prizes or participation in this promotion event. All winners shall be responsible for payment of any applicable taxes, licenses, registrations, or other imposed fees, on prize(s) won. Winners will be subject to all applicable taxes before release of prize, including back-up withholding if necessary. By participation in the promotion event, winners consent to the use of their names and/or likenesses for promotional purposes without additional compensation. Participants agree that the decisions of GRGE related to this promotion event and all drawings are final. Patron disputes, in which there is a refusal of paid winnings involving at least \$500.00 will be referred to the Tribal Gaming Office (TGO) in compliance with the Compact and Gaming Ordinance. In the event of a procedural dispute, the decision of a Gila River Gaming Enterprise management staff shall be final. Management reserves the right to alter, amend, edit or withdraw this promotion at any time, without prior notice (subject to prior approval from the TGO). Management reserves the right to distribute gifts from existing inventory. Management reserves the right to disqualify any individual found to discredit the integrity of the promotion through abuse, fraud or other exploitation of the official rules. GRGE reserves the right, in their sole discretion, to disqualify from this and/or future promotions any individual found to be tampering with, or attempting to defraud, the entry process or the operation of the promotion event; to be acting in violation of these rules; or to be acting in a disruptive manner or with intent to annoy, abuse, threaten or harass any other person.

Void Where Prohibited: This promotion event is void where prohibited or restricted by law.

EMAIL KIOSK GAME

Casino Promotions



- WHAT:** Email Kiosk Game
- WHEN:** Ongoing until terminated
- WHO:** All Players Club Members
- WHERE:** Any THE Card Kiosk
- DETAILS:** Players Club Members can go to any THE Card kiosk and participate in this promotion, even if they already have an email entered into their account. They will be asked to either confirm their old email or update their account with a new one. Once the guest enters their email, they will be redirected to an email verification screen. The guest will be sent an email with a four-digit code that they will enter in on the kiosk. They will then be able to play a game to determine how much Free Bonus Play they have won.

***FREE BONUS PLAY OF \$250 IS VALID FOR 24 HOURS**

STAY IN THE LOOP TEXT CAMPAIGN

Casino Promotions



WHAT: Stay in the Loop
WHEN: Ongoing until terminated
Drawing | Last Tuesday of every month
WHO: Open to all (new members must obtain Players Club Card to claim a prize)
WHERE: Anywhere
DETAILS:

1. Text 'GILA' to '24560'
2. Receive a link to a digital entry form
3. Submitting an entry form automatically enrolls you into the text campaign and monthly drawing
4. Must be opted-in to the text program at the time of drawing to win
5. Guests will receive between 2-5 text messages per month
6. Entries will remain in drawing until the end of promotion
7. Guests are eligible to win once per drawing
8. Guests will have 7 days to claim their prize (\$100 FBP is valid for 24 hours)
9. Drawing will be conducted by Tradeable Bits
10. Winners will be contacted via SMS
11. No redraws for forfeited prizes or disqualified guests
12. Winners will be announced on social media following the drawing
13. Prizes may change but will be announced prior to the new drawing month
14. Players club will receive the winners list of the guests and codes on the drawing day

STAY IN THE LOOP TEXT CAMPAIGN

Official Rules

Casino Promotions

Eligibility: Open to all eligible new members and existing members of the Gila River Hotel & Casinos Players Club. Participants must be aged 21 or older. Marketing Team Members, their immediate family (father, mother, sister, brother, spouse, children, grandparents, aunt & uncle) and household members of Marketing Team Members, and GRGE Team Members, are excluded from participation in Promotions, Lotteries and Tournaments.

No Purchase Necessary: Participants may text 'GILA' to 24560 to opt-in to receive text messages from Gila River Hotels & Casinos. Participants may also opt-out at any time during the promotional period by sending 'STOP' to 24560. Limit one (1) phone number per person.

Drawings: Eligible guests can text 'GILA' to 24560 to receive a link to an entry form. Guests must enter all fields required, to submit. Drawings will take place on the final Tuesday of each month and 10 winners will be contacted via telephone (SMS) and will have seven (7) days to pick up their prize from the Players Club. Prizes will include \$100 FBP.

Entry Activation: Guests are required to opt-in to receive text messages from Gila River Hotels & Casinos. Participating guests will receive between 2-5 text messages per month. All participating members in the Stay in the loop text campaign will be eligible to win. Guests must be actively opted-in at the time of the drawing to win. Membership at the players club is mandatory to claim a prize.

Odds of Winning: Odds of winning depend on the number of eligible entries received in the drawing.

Rules: By participating, contestants agree to be bound by these rules. The guest that is chosen will go through a verification process to ensure that the phone number provided and the phone number on the players club account match. Participants are eligible to win once per drawing. Name(s) will be drawn at the designated times and shall be announced on social media (Facebook/Instagram/Twitter). Participants need not be present to win. Winners will be notified by phone through SMS. Winners will have one week from time of drawing to claim prize. Winners must provide both a valid Photo I.D. (as accepted by GRGE's current approved identification policy) and Players Club card to the players club. If a guest does not have a players club account, new membership is mandatory to claim prize. Entries and prizes are non-transferable between participants. If any name drawn violates these official rules, qualification criteria, or contestant does not arrive within the allotted time their prize will be forfeited, no redraws will be conducted. GRGE is not responsible for late entries, or any technical or human error that may occur in the processing of entries.

Additional Terms. By accepting prizes, winners agree that GRGE, their affiliates and agents, will have no liability and will be held harmless by winners for any liability, loss, injury or damage to property or to person, due in whole or in part, directly, or indirectly, by reason of the acceptance, possession, use or misuse of the prizes or participation in this promotion event. All winners shall be responsible for payment of any applicable taxes, licenses, registrations, or other imposed fees, on prize(s) won. Winners will be subject to all applicable taxes before release of prize, including back-up withholding if necessary. By participation in the promotion event, winners consent to the use of their names and/or likenesses for promotional purposes without additional compensation. Participants agree that the decisions of GRGE related to this promotion event and all drawings are final. Patron disputes, in which there is a refusal of paid winnings involving at least \$500.00 will be referred to the Tribal Gaming Office (TGO) in compliance with the Compact and Gaming Ordinance. In the promotion event of a procedural dispute, the decision of a Gila River Gaming Enterprise management staff shall be final. Management reserves the right to alter, amend, edit or withdraw this promotion at any time, without prior notice (subject to prior approval from the TGO). Management reserves the right to distribute gifts from existing inventory. Management reserves the right to disqualify any individual found to discredit the integrity of the promotion through abuse, fraud or other exploitation of the official rules. GRGE reserves the right, in their sole discretion, to disqualify from this and/or future promotions any individual found to be tampering with, or attempting to defraud, the entry process or the operation of the promotion event; to be acting in violation of these rules; or to be acting in a disruptive manner or with intent to annoy, abuse, threaten or harass any other person.

Void Where Prohibited: This promotion event is void where prohibited or restricted.

BACKPACK GIVEAWAY

Casino Promotions



- WHAT:** Backpack Giveaway
- WHEN:** June 1, 2022 12:01AM –June 30, 2022 11:59PM *or until supplies last.*
- WHO:** All Players Club members who have earned **3500 (or 7000) points**
- WHERE:** Players Club
- DETAILS:** Starting June 1 guests who **earn 3500 (or 7000) points** can visit the Players Club and receive a backpack, with a maximum of 2 per person. Supplies are extremely limited. There is no make good if supplies run out.

Vee Quiva and Wild Horse Pass are the doing the same promotion during the same period. The kiosk will track their points per site only (Example: An LB kiosk will only show LB base points). Guests can also track points on the mobile app.

BACKPACK GIVEAWAY

OFFICIAL RULES

Casino Promotions

Eligibility: Open to all eligible Gila River Casinos Players Club members. Members must be aged 21 or older. Marketing Team Members, their immediate family (father, mother, sister, brother, spouse, children, grandparents, aunt & uncle) and household members of Marketing Team Members are excluded from participation in Promotions, Lotteries and Tournaments.

Entry Method: One (1) Backpack (fair market value: \$23.00) may be redeemed for every thirty-five hundred (3,500) base points earned on THE Card beginning at 12:01AM on June 1, 2022 through 11:59PM on June 30, 2022 while supplies last. Maximum of two (2) Backpacks during the promotional period per site, per person.

Odds of Winning: Odds of winning depend on the number of eligible guests participating in the promotion. The first Players Club members who earn 3,500 base points at each property will receive a Backpack while supplies last. No make good awards or prizes will be offered once the inventory is depleted.

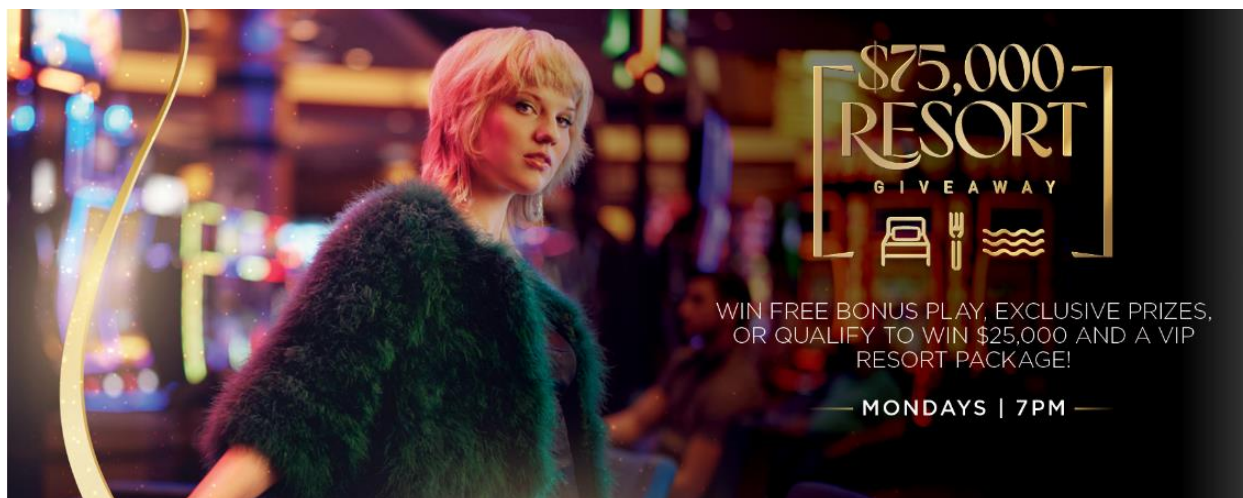
Rules: By participating, participants agree to be bound by these rules. Players Club members can visit Wild Horse Pass, Lone Butte, or Vee Quiva to redeem a maximum of two (2) Backpacks during the promotion month while supplies last. The participant must provide both a valid Photo I.D. (as accepted by GRGE's current approved identification policy) and Players Club card to redeem their Backpack. Prizes are non-transferable between participants or sites.

Additional Terms: By accepting prizes, winners agree that GRGE, their affiliates and agents, will have no liability and will be held harmless by winners for any liability, loss, injury or damage to property or to person, due in whole or in part, directly, or indirectly, by reason of the acceptance, possession, use or misuse of the prizes or participation in this promotion event. All winners shall be responsible for payment of any applicable taxes, licenses, registrations, or other imposed fees, on prize(s) won. Winners will be subject to all applicable taxes before release of prize, including back-up withholding if necessary. By participation in the promotion event, winners consent to the use of their names and/or likenesses for promotional purposes without additional compensation. Participants agree that the decisions of GRGE related to this promotion event and all drawings are final. Patron disputes, in which there is a refusal of paid winnings involving at least \$500.00 will be referred to the Tribal Gaming Office (TGO) in compliance with the Compact and Gaming Ordinance. In the event of a procedural dispute, the decision of a Gila River Gaming Enterprise management staff shall be final. Management reserves the right to alter, amend, edit or withdraw this promotion at any time, without prior notice (subject to prior approval from the TGO). Management reserves the right distribute gifts from existing inventory. Management reserves the right to disqualify any individual found to discredit the integrity of the promotion through abuse, fraud or other exploitation of the official rules. GRGE reserves the right, in their sole discretion, to disqualify from this and/or future promotions any individual found to be tampering with, or attempting to defraud, the entry process or the operation of the promotion event; to be acting in violation of these rules; or to be acting in a disruptive manner or with intent to annoy, abuse, threaten or harass any other person.

Void Where Prohibited: This promotion event is void where prohibited or restricted by law.

\$75,000 RESORT GIVEAWAY

Casino Promotions



WHAT: \$75,000 Resorts Giveaway
WHEN: Mondays | 7PM – 9PM, while supplies last | May 2 – July 25
WHO: All Players Club Members
WHERE: Kiosks or Mobile App

DETAILS: The first two-hundred fifty (250) guests to visit any promotional kiosk will be able to play a kiosk game each promotion week. Prizes range from \$5, \$10 or \$15 Free Bonus Play, Gila River Resorts & Casinos gift cards, a State 48 T-Shirt or a qualifier prize. The Grand Finale drawing will take place at 9PM on July 25, 2022. Any guest who qualifies for the grand finale has a chance to win a VIP Resort Package. The winner will receive a \$25,000 cash prize plus an invitation for a two-night stay in a Gila River Resort Suite at Wild Horse Pass, VIP transportation, poolside cabana with a food and beverage credit, a complimentary dinner, plus additional amenities based on the scheduled time of stay.

In addition, for every one-hundred fifty (150) points earned on THE Card on Mondays, guests will earn an Entry into the Grand Finale drawing on Monday, July 25, 2022. Guests can check their entries at any THE Card Kiosk or on the mobile app.

\$75,000 RESORT GIVEAWAY

OFFICIAL RULES

Eligibility: Open to all eligible Gila River Casinos Players Club members. Members must be aged 21 or older. Marketing Team Members, their immediate family (father, mother, sister, brother, spouse, children, grandparents, aunt & uncle) and household members of Marketing Team Members are excluded from participation in Promotions, Lotteries and Tournaments. By participating, you agree to these Official Rules and to all decisions of Gila River Gaming Enterprises (GRGE), which are final and binding in all respects.

No Purchase Necessary: Players Club members may play one (1) time through THE Card Kiosk per week on Mondays, May 2, 2022 – July 25, 2022. Limit one (1) participation per person, per week at one (1) casino site only. Players Club members may also obtain (1) free entry redeemable at THE Card Kiosk for the Grand Finale on Monday, July 25, 2022; limit one (1) free entry per person.

Additional Entry Methods: Players Club members will be able to earn entries towards the Grand Finale Drawing that takes place on July 25, 2022. One (1) drawing entry is earned for every one hundred-fifty (150) base points earned on THE Card on Mondays. Players Club members may receive bonus entries for the finale drawing via advertisements redeemable at THE Card Kiosks or at the Players Club, at Management's discretion.

Kiosk Game Details: The first two-hundred fifty (250) guests to visit any promotional kiosk will be able to play a kiosk game each promotion week. Guests may participate only one (1) time on Mondays each promotion week from 7PM–8PM or while supplies last, whichever comes first, from May 2, – July 25, 2022. Prizes range from \$5, \$10 or \$15 Free Bonus Play, Gila River Resorts & Casinos gift cards (valued under \$99), a State 48 t-shirt (\$10 value) or a qualifier prize. There will be one (1) prize per week, per property that will contain the qualifier icon. If this qualifier prize is not issued during any given week, the remaining qualifiers will be selected during the drawing on the last day of the promotion, July 25, 2022, prior to the Grand Finale. Any guest who qualifies for the grand finale has a chance to win a VIP Resort Life Package (valued at \$3,000). The winner will receive a \$25,000 cash prize plus an invitation for a two-night stay in a Gila River Resort Suite at Wild Horse Pass, VIP transportation, poolside cabana with a food and beverage credit, a complimentary dinner (up to \$500 including gratuity), plus additional amenities based on the scheduled time of stay. The grand finale prize is non-transferable. The finale qualifier on the following Mondays (5/2, 5/9, 5/16, 5/23, 5/30, 6/6, 6/13, 6/20, 6/27, 7/4, 7/11, 7/18, 7/25), will also win either a \$100 gift certificate to either the Wild Horse Pass Aji Spa & Salon or to the Wild Horse Pass Whirlwind Golf Club (valued at \$100). If the qualifier does not claim the gift certificate by 8PM on Monday night, the gift certificate will be forfeited and no make good will be issued.

Grand Finale Drawing: The Grand Finale drawing will take place at 9PM on July 25, 2022 at Lone Butte, Wild Horse Pass, and Vee Quiva. All qualifying winners throughout the promotion (a maximum of thirteen (13)) are required to check in at the promotional stage between 7:00PM–8:30PM on the day of the grand finale at the property where they received their qualifying prize(s). Any qualifier spots left over from previous weeks, or any of the qualifiers that do not check-in by 8:30PM will be re-drawn at 8:45PM, with an additional two (2) qualifiers, for a total of fifteen (15) qualifiers at each property. At 9PM, fifteen (15) \$75K Resort Giveaway qualifiers at each site will be randomly selected to pick one (1) envelope, of which one (1) will reveal a printed VIP Resort Life Package voucher and fourteen (14) will reveal \$250 Free Bonus Play consolation prizes. The grand finale winner may share the VIP Resort Life Package experience with one (1) guest of his/her choice. The grand finale prize is non-transferable. If the grand finale winner does not want to accept the VIP Resort Life Package, he/she may forfeit the prize, but no make good will be issued. Free Bonus Play will be restricted and cannot be cashed out. Free Bonus Play will be valid at Lone Butte, Wild Horse Pass, and Vee Quiva for 24 hours from time of issuance.

Entry Activation: Players Club members are required to activate their entry within one (1) hour of the Grand Finale drawing. Activation options are as follows: request for entry activation at Players Club, any activity at THE Card kiosks, or other specific activity on a gaming machine during the required activation period. Players Club members may request a Table Games supervisor to activate their entries at the Blackjack Pit – guest's rating must be closed prior to the drawing time during the activation period to activate within one (1) hour of the drawing time. Guests may have multiple chances to qualify to win the VIP Resort Life Package if they: received a qualifier icon on multiple promotion nights; and/or if they were selected during the grand finale drawing for additional qualifiers.

Odds of Winning: Odds of winning depend on the number of eligible entries received in the drawing.

Rules: By participating, participants agree to be bound by these rules. Eligible participants may participate only one (1) time per promotion day, and only from one (1) site per day. Guests may receive multiple qualifier prizes to make them a qualifier for the grand finale, as well may be selected during the grand finale drawing for qualifiers. Name(s) will be drawn at the designated times and shall be announced on the main casino floor. The participant must be present to win and will have four (4) minutes to provide both a valid Photo I.D. (as accepted by GRGE's current approved identification policy) and Players Club card to the drawing host. Both items must be in the hands of the drawing host within the four (4) minute time period to claim the prize. It is the sole responsibility of the potential winner to listen for the announced name, and to arrive at

the drawing area within the allotted time. Entries and prizes are non-transferable between participants or sites and may not be given, bartered, sold, or exchanged for another prize. If any name drawn violates these official rules, qualification criteria, or contestant does not arrive within the allotted times noted above, their prize will be forfeited and another name will be drawn until a winner is confirmed. GRGE is not responsible for late entries, or any technical or human error that may occur in the processing of entries, display or announcement of selected guests or pronunciation of names.

Additional Terms. By accepting prizes, winners agree that GRGE, their affiliates and agents, will have no liability and will be held harmless by winners for any liability, loss, injury or damage to property or to person, due in whole or in part, directly, or indirectly, by reason of the acceptance, possession, use or misuse of the prizes or participation in this promotion event. All winners shall be responsible for payment of any applicable taxes, licenses, registrations, or other imposed fees, on prize(s) won. Winners will be subject to all applicable taxes before release of prize, including back-up withholding if necessary. By participation in the promotion event, winners consent to the use of their names and/or likenesses for promotional purposes without additional compensation. Participants agree that the decisions of GRGE related to this promotion event and all drawings are final. Patron disputes, in which there is a refusal of paid winnings involving at least \$500.00 will be referred to the Tribal Gaming Office (TGO) in compliance with the Compact and Gaming Ordinance. In the event of a procedural dispute, the decision of a Gila River Gaming Enterprise management staff shall be final. Management reserves the right to alter, amend, edit or withdraw this promotion at any time, without prior notice (subject to prior approval from the TGO). Management reserves the right to distribute gifts from existing inventory. Management reserves the right to disqualify any individual found to discredit the integrity of the promotion through abuse, fraud or other exploitation of the official rules. GRGE reserves the right, in their sole discretion, to disqualify from this and/or future promotions any individual found to be tampering with, or attempting to defraud, the entry process or the operation of the promotion event; to be acting in violation of these rules; or to be acting in a disruptive manner or with intent to annoy, abuse, threaten or harass any other person.

Void Where Prohibited: This promotion event is void where prohibited or restricted.

BUILD YOUR BONUS

Casino Promotions



- WHAT:** Build Your Bonus
- WHEN:** Saturdays & Sundays in June
- WHO:** All Players Club Members
- WHERE:** Promo Kiosk
- DETAILS:** Players Club members will be eligible to participate in the Build Your Bonus promotion two days per week. The promotional period runs on Saturdays 12:01am to Sundays 11:59pm during the month of June. Guests will be eligible to build their Free Bonus Play rewards by earning base points on THE Card. Once each point threshold is reached, the guests can choose to redeem what they have earned or continue earning points throughout the promotional period for a larger value prize. Once the Free Bonus Play is redeemed, the promotion ends and the guest can participate again the following promotional period. Guest must select a prize value prior to the end of the promotion period or will forfeit any prize amount they may have been eligible for.

BUILD YOUR BONUS

Official Rules

Casino Promotions

"BUILD YOUR BONUS" PROMOTION

JUNE 4, 2022 – JUNE 26, 2022

VEE QUIVA | WILD HORSE PASS | LONE BUTTE

Eligibility: Open to all eligible Gila River Casinos Players Club members. Members must be aged 21 or older. Marketing Team Members, their immediate family (father, mother, sister, brother, spouse, children, grandparents, aunt & uncle) and household members of Marketing Team Members, and GRGE Team Members, are excluded from participation in Promotions, Lotteries and Tournaments.

Details: Players Club members will be eligible to participate in the Build Your Bonus promotion two days per week. The promotional period runs on Saturdays 12:01am to Sundays 11:59pm during the month of June. Guests will be eligible to build their Free Bonus Play rewards by earning base points on THE Card. Once each point threshold is reached, the guests can choose to redeem what they have earned or continue earning points throughout the promotional period for a larger value prize. Once the Free Bonus Play is redeemed, the promotion ends and the guest can participate again the following promotional period. Guest must select a prize value prior to the end of the promotion period or will forfeit any prize amount they may have been eligible for. Guest's earned points are not exchanged for their Free Bonus Play rewards. Point multipliers are not used in the point calculations; base points only.

Free Bonus Play Threshold & Prizes:

	Base Points - Goal	Free Bonus Play Prize	Days Valid
1	500	\$5.00	1 day
2	1000	\$10.00	1 day
3	1500	\$15.00	1 day
4	2000	\$20.00	1 day
5	2500	\$25.00	1 day
6	3000	\$30.00	1 day
7	3500	\$35.00	1 day
8	4000	\$40.00	1 day
9	5000	\$50.00	1 day
10	7500	\$75.00	1 day
11	10000	\$100.00	1 day
12	15000	\$150.00	1 day
13	25000	\$250.00	1 day
14	50000	\$500.00	3 days
15	100000	\$1,000.00	7 days
16	150000	\$1,500.00	7 days
17	200000	\$2,000.00	7 days

Rules: By participating, Players Club members agree to be bound by these rules. Participants are eligible to build their bonus once per promotional period, per promotional week. The participant must redeem Free Bonus Play rewards by 11:59PM on Sunday during the promotional period or forfeit any prize they may have been eligible to receive. Free Bonus Play is non-transferable between participants and may not be given, bartered, sold, or exchanged for another prize. Free Bonus Play can be used at any Gila River Casino. GRGE is not responsible for unredeemed Free Bonus Play, or any technical or human error that may occur in the processing and calculation of base points for their prize.

Additional Terms. By accepting prizes, winners agree that GRGE, their affiliates and agents, will have no liability and will be held harmless by winners for any liability, loss, injury or damage to property or to person, due in whole or in part, directly, or indirectly, by reason of the acceptance, possession, use or misuse of the prizes or participation in this promotion event. All winners shall be responsible for payment of any applicable taxes, licenses, registrations, or other imposed fees, on prize(s) won. Winners will be subject to all applicable taxes before release of prize, including back-up withholding if necessary. By participation in the promotion event, winners consent to the use of their names and/or likenesses for promotional purposes without additional compensation. Participants agree that the decisions of GRGE related to this promotion-event and all drawings are final. Patron disputes, in which there is a refusal of paid winnings involving at least \$500.00 will be referred to the Tribal Gaming Office (TGO) in compliance with the Compact and Gaming Ordinance. In the promotion event of a procedural dispute, the decision of a Gila River Gaming Enterprise management staff shall be final. Management reserves the right to alter, amend, edit or withdraw this promotion at any time, without prior notice (subject to prior approval from the TGO). Management reserves the right to distribute gifts from existing inventory. Management reserves the right to disqualify any individual found to discredit the integrity of the promotion through abuse, fraud or other exploitation of the official rules. GRGE reserves the right, in their sole discretion, to disqualify from this and/or future promotions any individual found to be tampering with, or attempting to defraud, the entry process or the operation of the promotion event; to be acting in violation of these rules; or to be acting in a disruptive manner or with intent to annoy, abuse, threaten or harass any other person.

Void Where Prohibited: This promotion event is void where prohibited or restricted.

UFC 275

Entertainment



WHAT: UFC 275 – Teixeira vs. Procházka (Main Event)
WHEN: June 11, 2022 | 7PM
COST: Free
WHO: Anyone
WHERE: BetMGM Sportsbook

MONEY HONEY SWIPE AND WIN

Direct Mail and Events

*** THIS IS A DIRECT MAIL OFFER THAT WAS ONLY SENT TO PLAYERS CLUB MEMBERS WHO QUALIFY BASED ON RATED PLAY. IT IS NOT AVAILABLE TO THE GENERAL PUBLIC.**



WHAT: Money Honey Swipe and Win
WHEN: Fridays in June | 7am – 7pm
WHO: **LB Dominant Players Club Members***
WHERE: Promo Kiosk or Mobile App
DETAILS: Invited guests can come in on Fridays from 7am – 7pm and swipe THE Card at any promo kiosk or the mobile app for a chance to win up to \$1,000 in Free Bonus Play. Eligibility based on past play.

Guests can play on the Gila River app from anywhere, they don't have to be at the casino. However, they need to use the Free Bonus Play at Lone Butte before it expires.

MONEY HONEY SWIPE AND WIN

OFFICIAL RULES

Direct Mail and Events

Eligibility: Open to all eligible Gila River Casinos Players Club members. Members must be aged 21 or older. Marketing Team Members, their immediate family (father, mother, sister, brother, spouse, children, grandparents, aunt & uncle) and household members of Marketing Team Members are excluded from participation in Promotions, Lotteries and Tournaments.

No Purchase Necessary: Invited Players Club Members will be notified by mail that they can come to Lone Butte Casino and play "Swipe & Win Fridays" on any promotion kiosk on Fridays between the hours of 7:00am- 7:00pm beginning March 5, 2021. Guests can also participate in this promotion anywhere by using the Gila River mobile app.

Prizes: The "Swipe & Win Fridays" promotion will run through the promotion kiosk and mobile app on Fridays between the hours of 7:00am- 7:00pm beginning March 5, 2021. Invited guests will receive one (1) attempt per Friday on the "Swipe & Win Fridays" game and they can win from \$15 to \$1,000 in Free Bonus Play. Free Bonus Play prizes won through the game will be automatically loaded on their Players Club card.

Free Bonus Play will be restricted and cannot be cashed out. Any unused Free Bonus Play will be forfeited by the guest. The prizes of \$15 to \$250 Free Bonus Play will be valid for 24 hours after time of redemption, a prize of \$500 Free Bonus Play will be valid for 72 hours after time of redemption, and a prize of \$1,000 will be valid for 7 days after time of redemption.

Odds of Winning: Odds of winning depend on the number of swipes received in the promotional kiosks.

Rules By participating, contestants agree to be bound by these rules. Maximum one (1) swipe per person, per day. Prizes are non-transferable between participants.

Additional Terms: By accepting prizes, winners agree that GRGE, their affiliates and agents, will have no liability and will be held harmless by winners for any liability, loss, injury or damage to property or to person, due in whole or in part, directly, or indirectly, by reason of the acceptance, possession, use or misuse of the prizes or participation in this promotion event. All winners shall be responsible for payment of any applicable taxes, licenses, registrations, or other imposed fees, on prize(s) won. Winners will be subject to all applicable taxes before release of prize, including back-up withholding if necessary. By participation in the promotion event, winners consent to the use of their names and/or likenesses for promotional purposes without additional compensation. Participants agree that the decisions of GRGE related to this promotion event and all drawings are final. Patron disputes, in which there is a refusal of paid winnings involving at least \$500.00 will be referred to the Tribal Gaming Office (TGO) in compliance with the Compact and Gaming Ordinance. In the event of a procedural dispute, the decision of a Gila River Gaming Enterprise management staff shall be final. Management reserves the right to alter, amend, edit or withdraw this promotion at any time, without prior notice (subject to prior approval from the TGO). Management reserves the right to distribute gifts from existing inventory. Management reserves the right to disqualify any individual found to discredit the integrity of the promotion through abuse, fraud or other exploitation of the official rules. GRGE reserves the right, in their sole discretion, to disqualify from this and/or future promotions any individual found to be tampering with, or attempting to defraud, the entry process or the operation of the promotion event; to be acting in violation of these rules; or to be acting in a disruptive manner or with intent to annoy, abuse, threaten or harass any other person.

Void Where Prohibited: This promotion event is void where prohibited or restricted by law.

IT'S YOUR DAY MONDAY DRAWINGS

Direct Mail and Events

*** A DIRECT MAIL FBP OFFER WAS SENT TO ONLY INVITATIONAL, PLATINUM, AND GOLD PLAYERS CLUB MEMBERS WHO QUALIFY BASED ON RATED PLAY. A DIRECT MAIL PIECE WAS SENT TO RUBY PLAYERS CLUB MEMBERS BUT WITH NO FBP OFFER.**



WHAT: It's Your Day Monday Drawings w/FBP
WHEN: **Monday, June 6 and 20** | 6pm – 9pm
WHO: LB Dominant Players Club Members*
WHERE: Promo Stage
PRIZE: \$250 - \$1,000 Free Bonus Play

DETAILS: Total of Eleven (11) winners for each promotion day.
6pm – Platinum – 2 winners of \$1000 Free Bonus Play
7pm – Gold – 3 winners of \$500 Free Bonus Play
8pm – Ruby – 4 winners of \$250 Free Bonus Play
9pm – All Tiers eligible – 2 winners of \$1000 Free Bonus Play

*Invitational, Platinum, and Gold players club card members will receive ½ their loyalty booklet offer preloaded to their account on drawing days.

***Available on the Gila River App**

***FREE BONUS PLAY OF \$250 IS VALID FOR 24 HOURS**

***FREE BONUS PLAY OF \$500-\$750 IS VALID FOR 72 HOURS**

***FREE BONUS PLAY OF \$1,000 IS VALID FOR 7 DAYS**

IT'S YOUR DAY MONDAY DRAWINGS

OFFICIAL RULES

Direct Mail and Events

Eligibility: Open to all eligible Gila River Casinos Players Club members. Members must be aged 21 or older. Marketing Team Members, their immediate family (father, mother, sister, brother, spouse, children, grandparents, aunt & uncle) and household members of Marketing Team Members are excluded from participation in Promotions, Lotteries and Tournaments.

No Purchase Necessary: Players Club members may obtain one (1) free entry on select Mondays of every month.

Additional Entry Methods: All eligible and prequalified Players Club Members may earn one (1) additional entry with every 150 points earned on select Mondays of every month.

Drawing Dates and Times: The first (1st) and third (3rd) Monday of every month starting March 1, 2018 with drawings at 6PM, 7PM, 8PM, and 9PM. Drawing times will be broken down by tiers. At 6PM, only Invitational and Platinum guests can participate. At 7PM, only Gold guests can participate. At 8PM, only Ruby guests can participate. At 9PM, Invitational, Platinum, Gold, Ruby, and Emerald guests can participate.

Drawings will change days during months with five (5) Mondays. Drawings will take place on the third (3rd) and fifth (5th) Monday of the month, except during the month of March 2021, June 2021 and August 2021. In March 2021, the two drawings will be rescheduled to the first (1st) and third (3rd) Monday of the month. In June 2021, the two drawings will be rescheduled to the second (2nd) and third (3rd) Monday of the month. In August 2021, the two drawings will be rescheduled to the first (1st) and third (3rd) Monday of the month. Free Bonus Play credits are valid for: \$250 FBP = 24 Hours, \$500 FBP = 72 Hours, \$1,000 FBP = 7 Days.

A total of eleven (11) winners will be drawn each promotion day.

Prize Drawings:

It's Your Day Monday will be held at Lone Butte Casino on select Mondays at 6PM, 7PM, 8PM, and 9PM. If a winner does not respond in the required four (4) minute time period or is deemed to be ineligible, another name will be drawn until a verified winner is confirmed. Prizes will be awarded based on the order contestants are selected and listed in the Drawing Client, regardless of any redraws that may occur. Newly selected contestants will fill into vacated positions of unconfirmed winners and the order will not change for verified winners. Prizes are as follows:

6PM: Two (2) \$1,000 Free Bonus Play

7PM: Three (3) \$500 Free Bonus Play

8PM: Four (4) \$250 Free Bonus Play

9PM: Two (2) \$1,000 Free Bonus Play

Entry Activation: Players Club members are required to activate entries within one (1) hour of each drawing for all drawings each promotion day. Entry activation period begins one (1) hour prior to each drawing and ends at the start of each drawing. Activation options are as follows: request for entry activation at Players Club, any activity at the Promo Kiosk, or other specific activity on a gaming machine during the activation period. Players Club members may request a Table Games Supervisor to activate their entries at the Blackjack Pit (rating must be closed prior to each drawing time during activation period to activate any additional earned entries or to activate within one (1) hour of each drawing time.)

Odds of Winning: Odds of winning depend on the number of eligible entries received in the drawing.

Rules: By participating, contestants agree to be bound by these rules. Entries drawn at any given drawing will be discarded and will not be eligible for subsequent drawings. Entries will remain in the virtual/manual drawing barrel for the entire promotion day. Participants are eligible to win once per drawing day. Name(s) will be drawn at the designated times and shall be announced on the main casino floor. The participant must be present to win and will have four (4) minutes at Lone Butte Casino to provide both a valid Photo I.D. (as accepted by GRGE's current approved identification policy) and Players Club card to the drawing host. Both items must be in the hands of the drawing host within the four (4) minute time period to claim the prize. It is the sole responsibility of the potential winner to listen for the announced name, and to arrive at the drawing area within the allotted time. Entries and prizes are non-transferable between participants or sites. If any name drawn violates these official rules, qualification criteria, or contestant does not arrive within the allotted time their prize will be forfeited, another name will be drawn until a winner is confirmed. GRGE is not responsible for late entries, or any technical or human error that may occur in the processing of entries or pronunciation of names.

Additional Terms: By accepting prizes, winners agree that GRGE, their affiliates and agents, will have no liability and will be held harmless by winners for any liability, loss, injury or damage to property or to person, due in whole or in part, directly, or indirectly, by reason of the acceptance, possession, use or misuse of the prizes or participation in this promotion event. All winners shall be responsible for payment of any applicable taxes, licenses, registrations, or other imposed fees, on prize(s) won. Winners will be subject to all applicable taxes before release of prize, including back-up withholding if necessary. By participation in the promotion event, winners consent to the use of their names and/or likenesses for promotional purposes without additional compensation. Participants agree that the decisions of GRGE related to this promotion event and all drawings are final. Patron disputes, in which there is a refusal of paid winnings involving at least \$500.00 will be referred to the Tribal Gaming Office (TGO) in compliance with the Compact and Gaming Ordinance. In the event of a procedural dispute, the decision of a Gila River Gaming Enterprise management staff shall be final. Management reserves the right to alter, amend, edit or withdraw this promotion at any time, without prior notice (subject to prior approval from the TGO). Management reserves the right to distribute gifts from existing inventory. Management reserves the right to disqualify any individual found to discredit the integrity of the

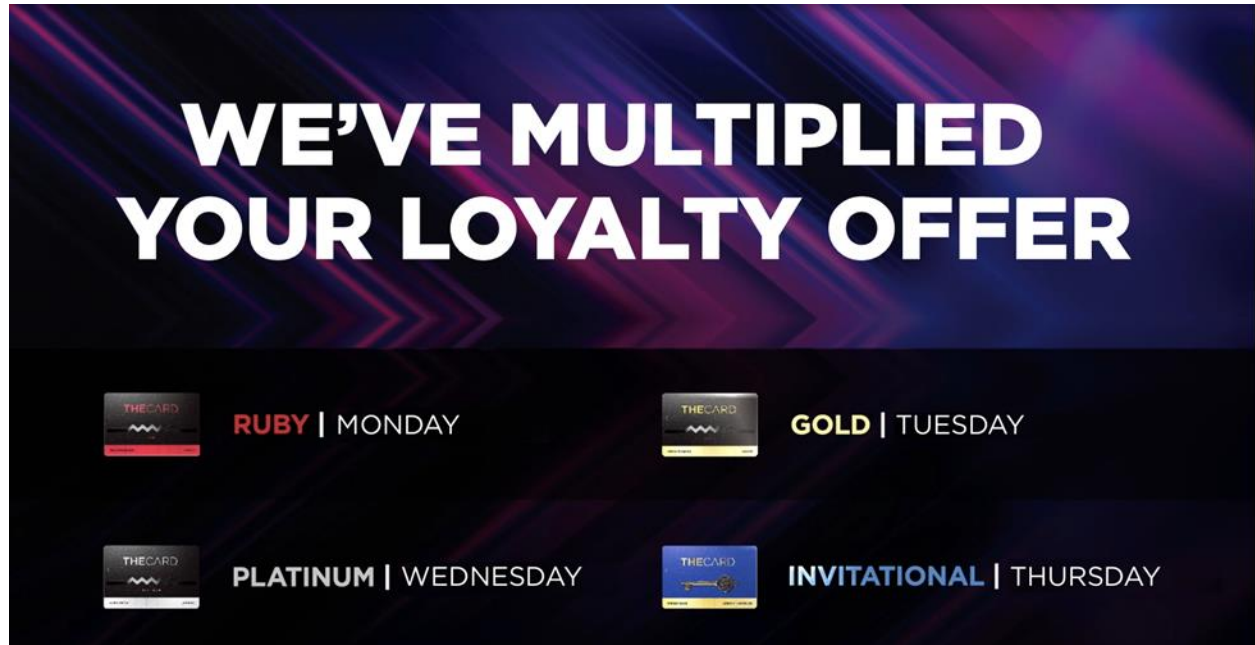
Void Where Prohibited: This promotion event is void where prohibited or restricted by law.

Free Bonus Play Highlights:

1. Name of Promotion: It's Your Day Monday
2. Date : March 1, 2018 – On-going until terminated
3. Description: Players Club members will be sent a direct mail invitation with an offer based on play. The offer will range from \$5 - \$150. During the drawing, Free Bonus Play will also be awarded as prizes. Free Bonus Play Prize amounts will range from \$250 - \$1,000. The direct mail Free Play offer will be valid from 6AM – 11:59PM on the day of the drawing. Free Bonus Play prizes will be valid for two (2) days from date of issuance.
4. Frequency: Free Bonus Play prizes will be awarded during all of the four drawings on each of the Monday nights of this promotion.
5. Credit Range: \$5 - \$1,000 Free Bonus Play; restricted – cannot be cashed out
6. How credits will be issued: Direct Mail Free Play will be preloaded to the account; Free Bonus Play prizes are issued through the Drawing Client
7. Patron eligibility: Active Player's Club members of predetermined promotion eligible group.

MEMBERSHIP MULTIPLIER

Direct Mail and Events



- WHAT:** Membership Multiplier
WHEN: Monday – Thursday
WHO: **Select Players Club Members***
WHERE: All three properties
DETAILS: Players Club members that receive the Loyalty Magazine will receive a multiplied amount of their weekly Free Bonus Play.

Select Players Club members will receive a direct mail and/or email offer multiplying their weekly Loyalty Magazine offer depending on their card status. Eligible guests will have their Loyalty Magazine offer multiplied each week. The multiplier and day of the week are as follows:

Ruby – 2x on Mondays during the promotional period.

Gold – 2x on Tuesdays during the promotional period.

Platinum – 3x on Wednesdays during the promotional period.

Invitational – 3x on Thursdays during the promotional period.

This will all run through the kiosk, FBP will be loaded to THE Card after they tap the tile.

PULL TAB PROMOTION

Direct Mail and Events

*** THIS IS A DIRECT MAIL OFFER THAT WAS ONLY SENT TO PLAYERS CLUB MEMBERS WHO QUALIFY BASED ON RATED PLAY. IT IS NOT AVAILABLE TO THE GENERAL PUBLIC.**



WHAT: June Pull Tab Promotion
WHEN: Wednesdays in June | 10am – 10pm
WHO: **Select Players Club Members ***
WHERE: Promo Kiosks or Mobile App
DETAILS:

Select Players Club members will receive an invitation to come in and pick-up a virtual Pull Tab on Wednesday, June 1, 8, 15, 22, and 29, 2022, from 10am to 10pm at the promotional kiosks. Guest may receive one virtual Pull Tab each promotion day. Guest will go to the kiosk to pick their virtual pull-tab to see what prize they have won. A total of **1000** Pull Tabs will be given out each promotion day, while supplies last. An alternate prize of \$5 Free Bonus Play will be awarded in the event the pull-tab supply is depleted prior to the end of the promotion day. Prizes include \$10 - \$2500 Free Bonus Play.

***FREE BONUS PLAY OF \$5-250 IS VALID FOR 24 HOURS**
***FREE BONUS PLAY OF \$500 IS VALID FOR 72 HOURS**
***FREE BONUS PLAY OF \$1,000-\$2,500 IS VALID FOR 7 DAYS**

PULL TAB PROMOTION

OFFICIAL RULES

Direct Mail and Events

Eligibility: Open to all eligible Gila River Casinos Players Club members. Members must be aged 21 or older. Marketing Team Members, their immediate family (father, mother, sister, brother, spouse, children, grandparents, aunt & uncle) and household members of Marketing Team Members are excluded from participation in Promotions, Lotteries and Tournaments.

No Purchase Necessary: Invited Players Club Members will receive a property specific direct mail offer to swipe and win on select Wednesdays at Lone Butte Casino and Wild Horse Pass Hotel and Casino, and select Saturdays at Vee Quiva Hotel and Casino. Guests will receive one (1) free swipe at any promotional kiosk each week between 10:00am and 10:00pm beginning April 3, 2021.

Prizes: The "Pull Tabs Swipe & Win" promotion will run through the promotion kiosk on select Wednesdays between the hours of 10:00am- 10:00pm beginning April 07, 2021 at Lone Butte Casino and Wild Horse Pass Hotel and Casino. The "Pull Tabs Swipe & Win" promotion will run through the promotion kiosk on select Saturdays between the hours of 10:00am- 10:00pm beginning April 03, 2021 at Vee Quiva Casino. Invited guests will receive one (1) attempt per promotional day on the "Pull Tabs Swipe & Win" game and they can win from \$5 to \$2,500 in Free Bonus Play. Free Bonus Play prizes won through the game will be automatically loaded on their Players Club card.

Free Bonus Play will be restricted and cannot be cashed out. Any unused Free Bonus Play will be forfeited by the guest. The prizes of \$5 to \$250 Free Bonus Play will be valid for 24 hours after time of redemption and prizes of \$500 Free Bonus Play will be valid for three (3) days after time of redemption. Prizes \$1,000-\$2,500 Free Bonus Play will be valid for seven (7) days after time of redemption.

Odds of Winning: Odds of winning depend on the number of swipes received in the promotional kiosks.

Rules By participating, contestants agree to be bound by these rules. Maximum one (1) swipe per person, per day. Prizes are non-transferable between participants.

Additional Terms: By accepting prizes, winners agree that GRGE, their affiliates and agents, will have no liability and will be held harmless by winners for any liability, loss, injury or damage to property or to person, due in whole or in part, directly, or indirectly, by reason of the acceptance, possession, use or misuse of the prizes or participation in this promotion event. All winners shall be responsible for payment of any applicable taxes, licenses, registrations, or other imposed fees, on prize(s) won. Winners will be subject to all applicable taxes before release of prize, including back-up withholding if necessary. By participation in the promotion event, winners consent to the use of their names and/or likenesses for promotional purposes without additional compensation. Participants agree that the decisions of GRGE related to this promotion event and all drawings are final. Patron disputes, in which there is a refusal of paid winnings involving at least \$500.00 will be referred to the Tribal Gaming Office (TGO) in compliance with the Compact and Gaming Ordinance. In the event of a procedural dispute, the decision of a Gila River Gaming Enterprise management staff shall be final. Management reserves the right to alter, amend, edit or withdraw this promotion at any time, without prior notice (subject to prior approval from the TGO). Management reserves the right to distribute gifts from existing inventory. Management reserves the right to disqualify any individual found to discredit the integrity of the promotion through abuse, fraud or other exploitation of the official rules. GRGE reserves the right, in their sole discretion, to disqualify from this and/or future promotions any individual found to be tampering with, or attempting to defraud, the entry process or the operation of the promotion event; to be acting in violation of these rules; or to be acting in a disruptive manner or with intent to annoy, abuse, threaten or harass any other person. **Void Where Prohibited:** This promotion event is void where prohibited or restricted by law.

JUNE POKER PROMOTIONS



**POKER
RAKE
BACK**
LONE BUTTE

RECEIVE UP TO \$1,000
FOR RECORDED HOURS
OF LIVE PLAY!

ACCUMULATE HOURS FROM
MAY 1 - 31, 2022

REDEEM HOURS FROM
JUNE 10-17, 2022

See Poker Room for details.



**POKER
HOT SEATS**
LONE BUTTE

**\$100 HOT
SEATS HOURLY
12AM-11PM**

See Poker Room for details.



LONE BUTTE
**SUPER BONUS
HIGH HAND**

Top Hand wins **\$250!**
Qualify every 15 minutes
Qualifying hands of Full House or better

Every Sunday & Tuesday in June.
from 12PM-10PM



PRIZE POOL TOURNAMENT
**LADIES
\$15,000
GUARANTEED**
LONE BUTTE

**GET YOUR POKER
FACE READY**



**SURVIVOR
POKER
TOURNAMENT**
LONE BUTTE



**CASH FOR
SPADES**
LONE BUTTE

**WIN \$100
FOR A QUALIFYING
SPADE FLUSH**

**SUNDAY
JUNE 19 | 12PM-10PM**

See Poker Room for details.

JUNE POKER PROMOTIONS

Continued



Every Wednesday @ 7PM
\$100 to enter



Every Thursday @ 11AM
\$100 to enter



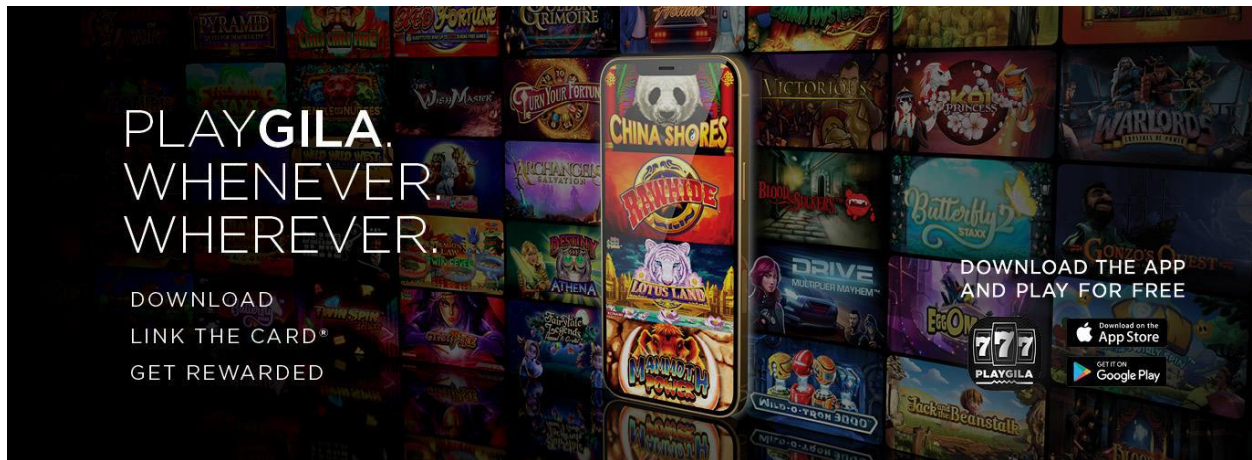
Every Thursday @ 7PM
\$100 to enter



See Poker Room for details.

PLAYGILA APP

Informational



- WHAT:** PlayApp Gila
- WHO:** All Players Club Members
- WHERE:** Mobile App
- DETAILS:** PlayGila is a free-to-play, online social casino that allows guests to play their favorite games they know and love from our three casino floors on any device, no matter when or where they are. To access PlayGila, visit playgila.com or download the PlayGila app for free from the Google Play or Apple App store. Signing up and playing is completely free, guests will get a certain amount of free coins daily. Guests have the ability to purchase additional coins within the app/website if they choose to. Guests can link THE Card to their PlayGila account to earn rewards that can be redeemed on property. **These games are intended for use only by those 21 or older, and only for amusement purposes. No actual money or anything of value can be won playing these games. Game availability may vary depending on platform and operating system.**

Things to note:

- Guests signing up for the first time through the app will get a 50,000 coin bonus
- Guests will be receiving e-blasts and mailers with promo codes for bonus coins
- Promo codes can only be entered on the website
- There are some games that are available on the website and not the mobile app yet
- Rewards are only earned through the purchase of coins
- Rewards earned on the app/website can only be redeemed for Free Bonus Play or Promo chips
- Points earned on the site do not count toward tier status or other marketing offers
- Team members are eligible to use PlayGila